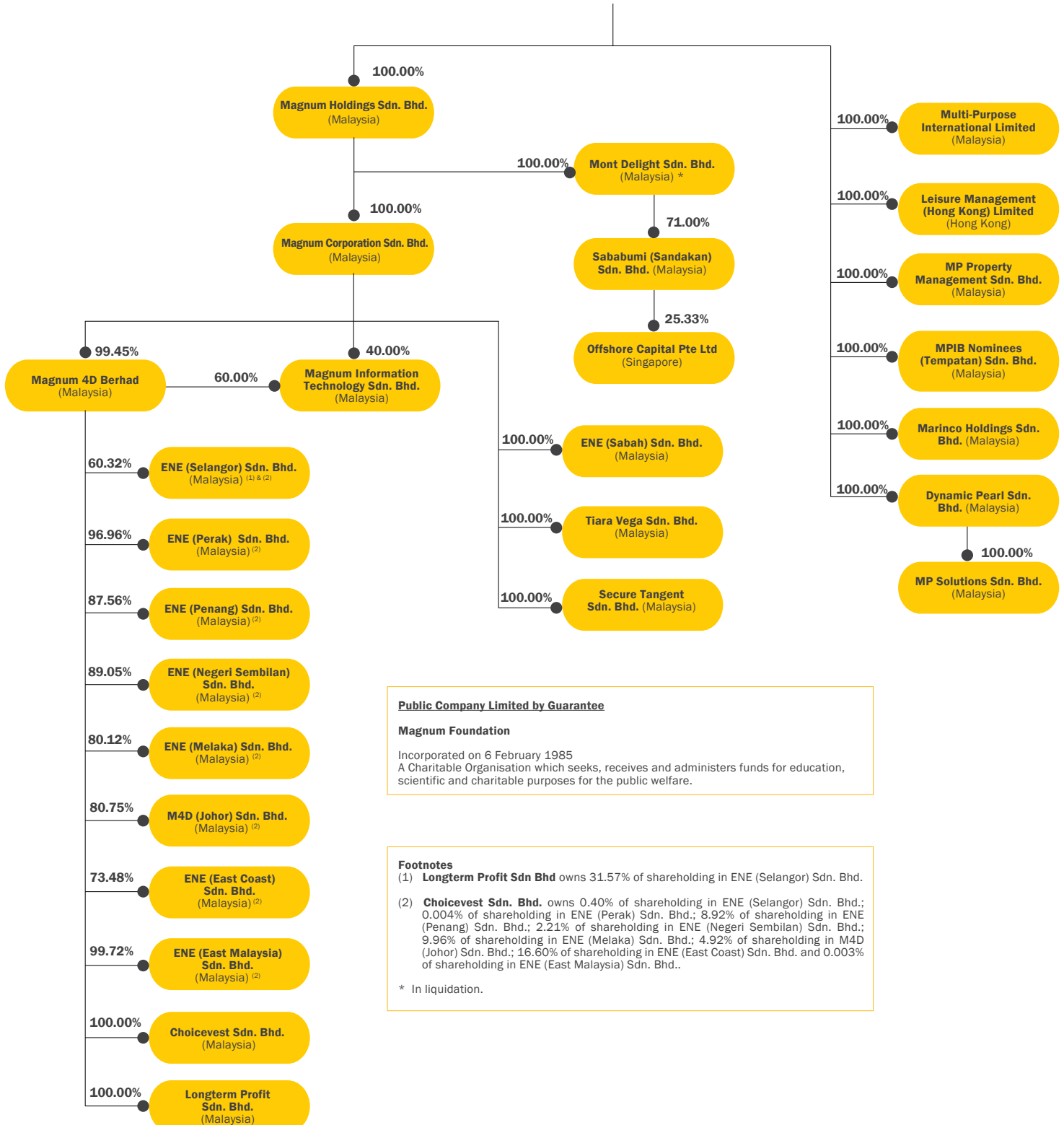


# CORPORATE STRUCTURE AS AT 3 APRIL 2017



**Magnum Berhad**

[Listed on Bursa Malaysia Securities Berhad]



**Public Company Limited by Guarantee**

**Magnum Foundation**

Incorporated on 6 February 1985  
A Charitable Organisation which seeks, receives and administers funds for education, scientific and charitable purposes for the public welfare.

**Footnotes**

(1) Longterm Profit Sdn Bhd owns 31.57% of shareholding in ENE (Selangor) Sdn. Bhd.

(2) Choicevest Sdn. Bhd. owns 0.40% of shareholding in ENE (Selangor) Sdn. Bhd.; 0.004% of shareholding in ENE (Perak) Sdn. Bhd.; 8.92% of shareholding in ENE (Penang) Sdn. Bhd.; 2.21% of shareholding in ENE (Negeri Sembilan) Sdn. Bhd.; 9.96% of shareholding in ENE (Melaka) Sdn. Bhd.; 4.92% of shareholding in M4D (Johor) Sdn. Bhd.; 16.60% of shareholding in ENE (East Coast) Sdn. Bhd. and 0.003% of shareholding in ENE (East Malaysia) Sdn. Bhd..

\* In liquidation.